

Car Dash Cam

User Manual

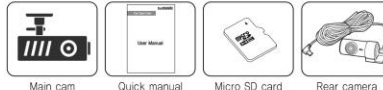


samsonix
R900 /R910

Package Components ②

Due to improvement in better quality and performance of the product, the real components are subject to change without notice.

Bundle



Main cam Quick manual Micro SD card Rear camera



Cable holder Hardware power cable SD card reader

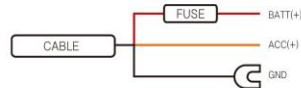
Option



External GPS Cigar power cable

Power Cable Hardwiring ③

Power Cable Hardwiring



Use the hardware power cable.

BATT(+) (red color)

Connect the red wire cable to permanent power fuse box. (EX: emergency lamp, dome light, tail light etc.)

ACC(+) (yellow color)

Connect the yellow cable to the fuse that gets power through the ignition. (EX: cigarette lighter, audio)

GND (black color)

Connect the black cable to the vehicle chassis or vehicle bolts.



PC Viewer Use



- You can play the video recorded in this device in PC.
- Install bundled PC viewer to check the video.
- You can download PC viewer in Samsonix home page.

File Saving Guide ④

Open TAT file

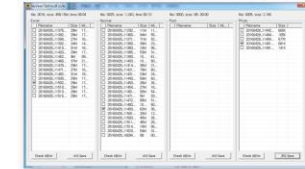
This DVR saves files by TAT function which do not require SD card format. Files saved by TAT are not shown in public player, but shown in only bundled PC viewer or browser. Refer to below TAT browser manual.

How to change and save TAT file in PC

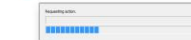
- Execute AVI file converter.exe stored in bundled SD card. This software is Windows version, and generated automatically after you use the SD card in the DVR.

Name	Date	Type	Size
AVI File Converter.exe	2014-03-25 ...	exe Program	145KB
ESAVIViewer.dll	2014-03-24 ...	exe Program	88KB
TATLib.dll	2014-03-24 ...	exe Program	315KB
VpsLib.dll	2014-03-24 ...	exe Program	315KB

- Double click the file. Or after selecting a file click AVI button in bottom then the file will be converted to AVI file.



File converting



File convert completed



- Can play AVI files in public PC video player.

APP Installing ⑤

Android APP Installing

- Go to "Play Store" APP in the smart phone.
- Go to search in Play Store.
- Type and search "SAM Dashcam"
- Choose "SAM Dashcam" in the searched list.
- Install the DVR APP by clicking "Install" button.
- If install is successful, you can see "SAMSONIX" icon in the phone main screen.



APP Installing ⑥

iOS APP Installing

- Go to "APP Store" in the smartphone.
- Go to search in APP Store.
- Type and search "SAM Dashcam"
- Click download.
- Download and install the SAMSONIX APP.
- If install is successful, you can see "SAMSONIX" icon in the phone main screen.



Main Functions ⑦

Main Screen



Real time video

- To check real time video.
- To reverse front / rear video.
- To On/Off voice recording.
- To capture photo.

Down file

- To play the downloaded video files in your smartphone.

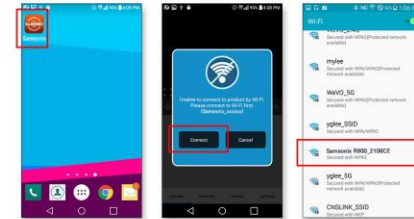
Car DVR

- To check recorded video files in DVR.
- To download video files to your smartphone.

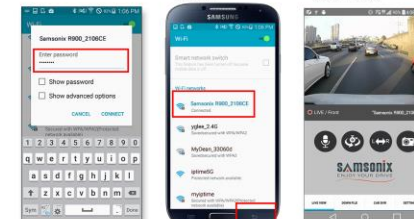
Settings

- To configure various settings, or change WiFi password.

WiFi Connection with DVR (Android) ⑧



- Click "SAMSONIX" icon in the main screen.
- Click "Connect" when WiFi connection screen pops up.
- Choose "SAMSONIX_R900_XXXXXX" in the searched list.



- Input password and click connection button. (initial password is 12345678) of smartphone.
- If WiFi is connected, click the backward button will be displayed.

WiFi Connection with DVR (iOS) ⑨



- Click "SAMSONIX" icon in the main screen.



- If Wi-Fi is off, turn on the Wi-Fi.



- If Wi-Fi setting screen is displayed, click "OK".



- Choose "SAMSONIX_R900_XXXX" in the searched list.

WiFi Connection with DVR (iOS) ⑩



- Input password and click connection button.



- Go out from Wi-Fi setting screen, and start "SAMSONIX" app again.



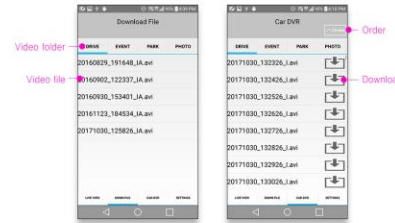
- If Wi-Fi is connected, you can see "V" mark on the top.



- If Wi-Fi is connected with DVR, real time video will be displayed.

Recorded File List ⑪

File List



Recorded File List (downloaded file)

- It displays downloaded file list to smartphone.
- Folders have driving/event/parking/photo folders.
- Click the file in each folder to play.
- File storing folder : Internal memory / SAMSONIX /

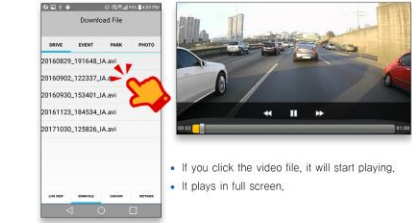
Recorded File List (DVR)

- It displays files stored in DVR.
- Folders have driving/event/parking/photo folders.
- Click the file in each folder to play.
- If you click download icon next to the file, the file will be downloaded in your smartphone.
- Front and rear video files are downloaded separately.



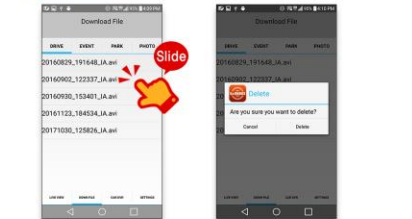
Video Playback ⑫

Video Playback



- If you click the video file, it will start playing.
- It plays in full screen.

Video Deletion



- Swipe left the file to delete it, a file deletion message will pop up.
- If you click "deletion", it will be deleted.

Video Share ⑬

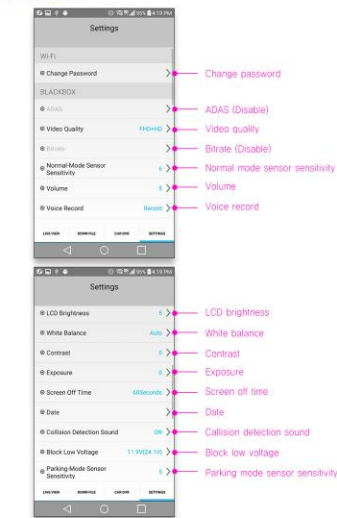
Video Share



- If you keep pressing a video file for 2 seconds, file share APPs will pop up. You can share video files through e-mail, web messenger, etc.

Settings ⑭

Setting Screen



Settings ⑮

Setting Screen

